



The Dumbbell Nebula (M27) by Steve Hamilton. [Meade 8" LX90 Schmidt-Cassegrain](#) with [Meade Deep Sky Imager](#).



Apennine Mountains by Steve Hamilton. [Meade LX90 8" Schmidt-Cassegrain](#) with [Meade Deep Sky Imager](#).



Bubble Nebula by Iver Riise with [Meade 8" LX90 Schmidt-Cassegrain](#). LRGB image 180 min. total exposure.



Dumbbell Nebula (M27) by Iver Riise with [Meade 8" LX90 Schmidt-Cassegrain](#). LRGB image 125 min. total exposure time.



Iris Nebula by Iver Riise with [Meade 8" LX90 Schmidt-Cassegrain](#). LRGB image 170 min. total exposure.



M13 by Iver Riise with [Meade 8" LX90 Schmidt-Cassegrain](#). LRGB image total exposure 174 min.



Hubble's Variable Nebula by Iver Riise with [Meade 8" LX90 Schmidt-Cassegrain](#). LRGB image 170 min. total exposure.



The Sombrero Galaxy (M104) by Steve Hamilton. [Meade LX90 8" Schmidt-Cassegrain](#), [DSI Pro](#) (Lum=20x3 minutes) and [DSI](#) (10x3 minutes).



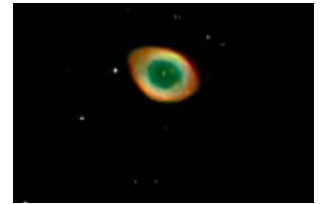
Saturn by Ken Gamble. [Meade LX90 8" Schmidt-Cassegrain](#), [Meade LPI](#).



Jupiter by Steve Hamilton. [Meade LX90 8" Schmidt-Cassegrain](#), [Meade LPI](#) (150 images stacked).



Saturn by Steve Hamilton. [Meade LX90 8" Schmidt-Cassegrain](#), [Meade LPI](#) (565 images stacked).



The Ring Nebula (M57) by Eric Madeleine. [Meade LX90 8" Schmidt-Cassegrain](#), [Philips Vesta Pro](#) (70x15 seconds).



The Moon by Shahriar Davoodian. [Meade LX90 8" Schmidt-Cassegrain](#). Canon 300D, 1/125 th exposure at ISO400.



The Dumbbell Nebula (M27) by Eric Madeleine. [Meade LX90 8" Schmidt-Cassegrain](#), [Philips Vesta Pro](#) (250x10 seconds).



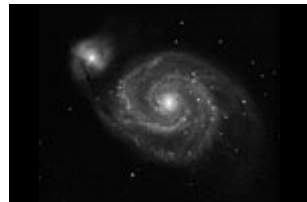
Leo's Triplet by Steve Hamilton. [Meade LX90 8" Schmidt-Cassegrain](#). Canon Digital Rebel, 3x6 minute exposures at ISO1600.



The Eagle Nebula (M16) by Eric Madeleine. [Meade LX90 8" Schmidt-Cassegrain](#), [Philips Vesta Pro](#) (160x10 seconds).



The Orion Nebula (M42) by Steve Hamilton. [Meade LX90 8" Schmidt-Cassegrain](#). Canon Digital Rebel, 45.5 minutes total exposure time.



The Whirlpool Galaxy (M51) and SN2005CS by Jean Marie Jatteau. [Meade LX90 8" Schmidt-Cassegrain](#), [Philips ToUCam Pro](#) (200x20 seconds).



The Dumbbell Nebula (M27) by Jean Marie Jatteau. [Meade LX90 8" Schmidt-Cassegrain](#), [Philips ToUCam Pro](#) (186x35 seconds).



The Crab Nebula (M1) by Iver Riise. [Meade LX90 8" Schmidt-Cassegrain](#) @ f/10. Starlight Xpress MX-716 (L=55 min, R=15 min, G=15 min, B=22 min).



The Orion Nebula (M42) by Iver Riise. [Meade LX90 8" Schmidt-Cassegrain @ f/3](#). Starlight Xpress MX-716 (L=15 min, R=7.5 min, G=7.5 min, B=10 min).



The Horsehead Nebula (B33) by Iver Riise. [Meade LX90 8" Schmidt-Cassegrain @ f/10](#). Starlight Xpress MX-716 (L=115 min, R=30 min, G=30 min, B=45 min).



The Cocoon Nebula (IC 5146) by Iver Riise. [Meade LX90 8" Schmidt-Cassegrain @ f/3](#). Starlight Xpress MX-716 (L=48 min, R=12 min, G=12 min, B=18 min).



The Moon by Ed Sampson. [Meade LX90 8" Schmidt-Cassegrain](#). [Meade LPI](#) (5 image mosaic).



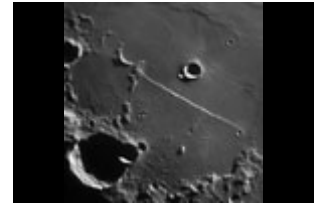
The Sombrero Galaxy (M104) by Iver Riise. [Meade LX90 8" Schmidt-Cassegrain @ f/5](#). Starlight Xpress MX-716 (L=70 min, R=15 min, G=15 min, B=20 min).



Crater Clavius by Edward Roach. [8" LX90 UHTC w/ Phillips ToUcam Pro 840 wecam](#).



Saturn by Ed Sampson. [Meade LX90 8" Schmidt-Cassegrain @ f/20](#). Phillips ToUcam Pro II (1100 frames stacked).



Rupes Recta by Edward Roach. [8" LX90 UHTC w/ ToUcam Pro 840](#). 191 stacked frames.



Jupiter by Edward Roach. [LX90](#) and ToUcam. 590 stacked frames



Jupiter & Io by Edward Roach [LX90](#) and ToUcam Pro 840 429 stacked frames



Crater Maurolycus by Edward Roach [LX90](#) and ToUcam Pro 840 260 Stacked Frames



Craters Heraclitus & Licetus by Edward Roach [LX90](#) and ToUcam Pro 840 285 stacked frames.



Crater Copernicus by Edward Roach [LX90](#)



Crater Schiller by Edward Roach [LX90](#) and ToUcam Pro 840



Crater Walter by Edward Roach [LX90](#) and ToUcam Pro 840 744 Stacked Frames



Craters Stofler & Faraday by Edward Roach [LX90](#) and ToUcam Pro 840 250 Stacked Frames



Jupiter by Lee Zagar [LX90](#) and [DSI](#)



Saturn by Edward Roach [LX90](#) with ToUcam Pro 840 744 stacked frames



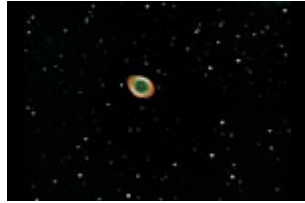
M42 by Jason Lane [Meade 8" LX90 Classic](#) with Olympus OM-1 and Fuji Provia 400F 35mm color slide film. Combination of 5, 10, 60 minute exposures



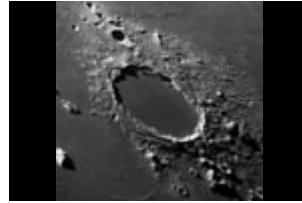
Mars by Edward Roach [LX90](#) and ToUcam 840. 1166 stacked frames.



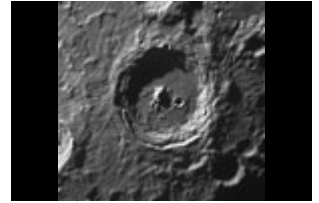
Solar System by Jimmy Eubanks [Meade LX90-LNT](#). Sun and Moon taken with Sony DSC-F717 and Scopetronix Maxview II Afocal Adapter. Planetary images taken with [Meade LPI](#).



M57 by Mike Sabina [LX90](#) @f/3.3 and [DSI Color](#) 20images x 35seconds



Plato by Edward Roach [LX90](#) and Phillips ToUcam 300 stacked frames.



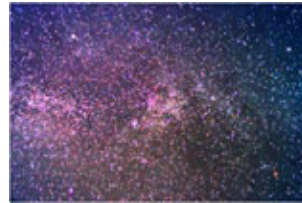
Arzachel by Edward Roach [LX90](#) and Phillips ToUcam 300 stacked frames.



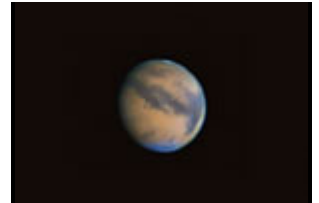
Posidonius by Edward Roach [LX90](#) and Phillips ToUcam 265 stacked frames.



Tycho by Edward Roach [LX90](#) and Phillips ToUcam 300 stacked frames.



Northern Milky Way by Jimmy Eubanks [LX90-LNT](#) with Sony DSC-F717.



Mars by Edward Roach [Meade 8" LX90](#) w/ UHTC and Phillips ToUcam 840. 800 stacked frames.